

Modular Sport Light Series



THERMAL MANAGMENT

Cold forging technology with high purity aluminum improves heat management

EASY INSTALLATION

- Tool-less screw with handle
- Humanized handle design

MAINTANENCE

Hinge design driver carbine can be open easily

LEGO DESIGN LIGHT ENGINE

Play and Plug design for easy assembly and installation

BREATHING VALVE

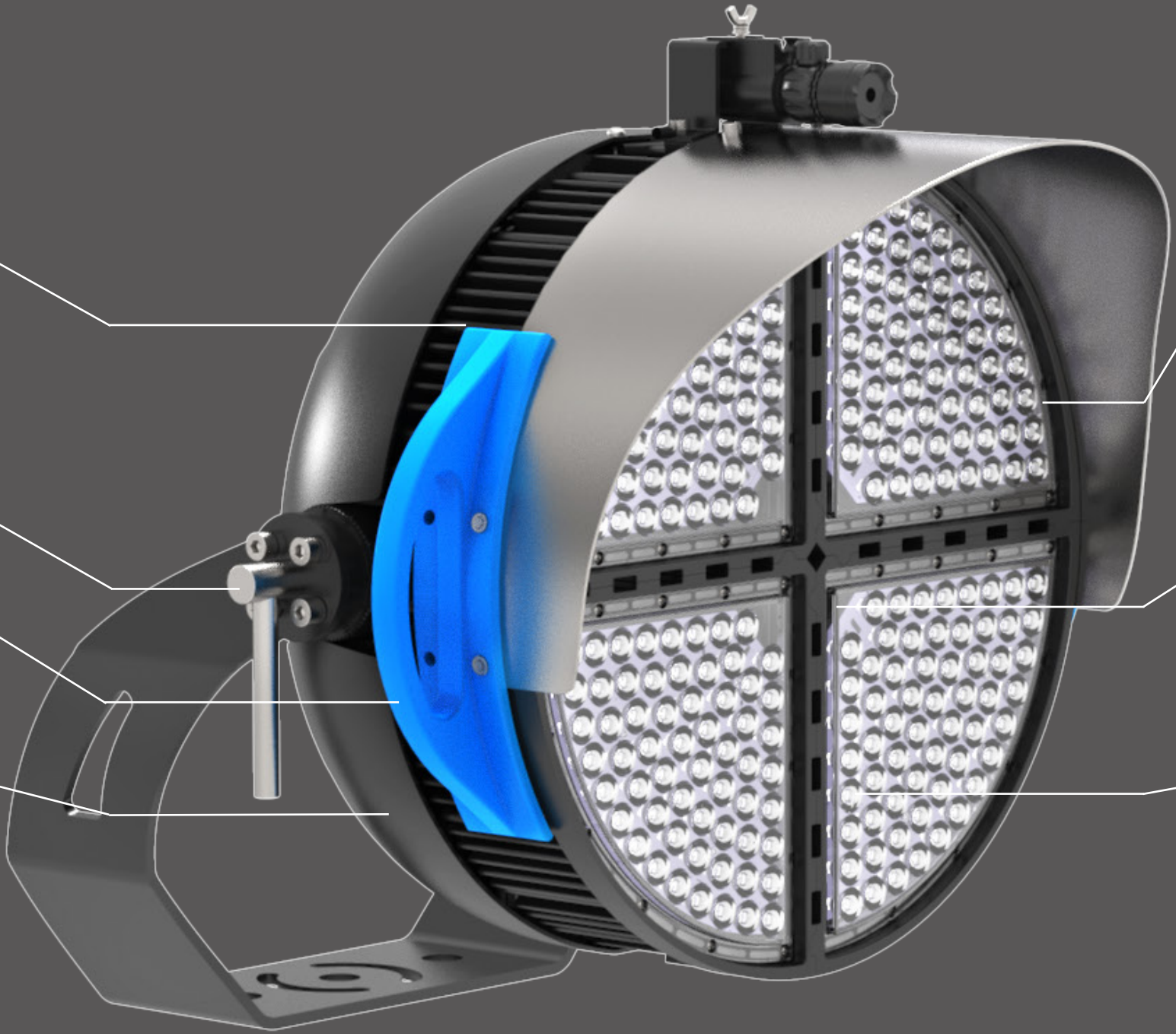
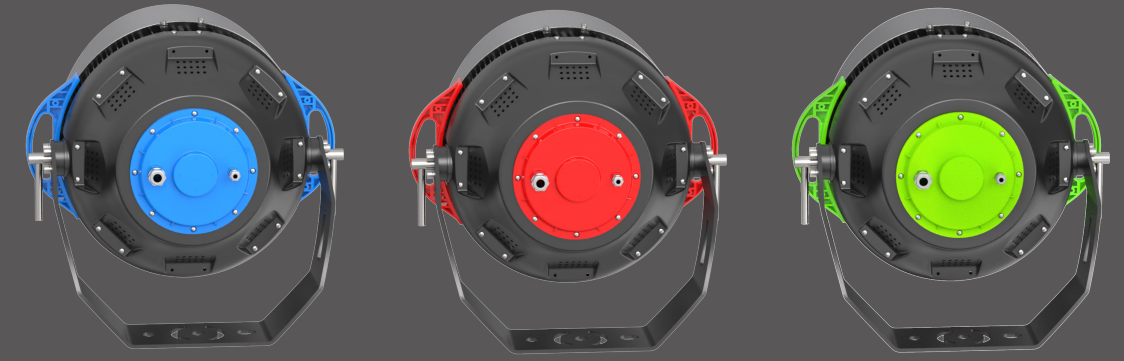
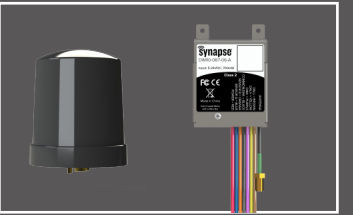
Release pressure to prevent moisture buildup

OPTICS NEMA 2/3/4/5

Advanced material with high transmittance and anti-glare design

FUNCTION

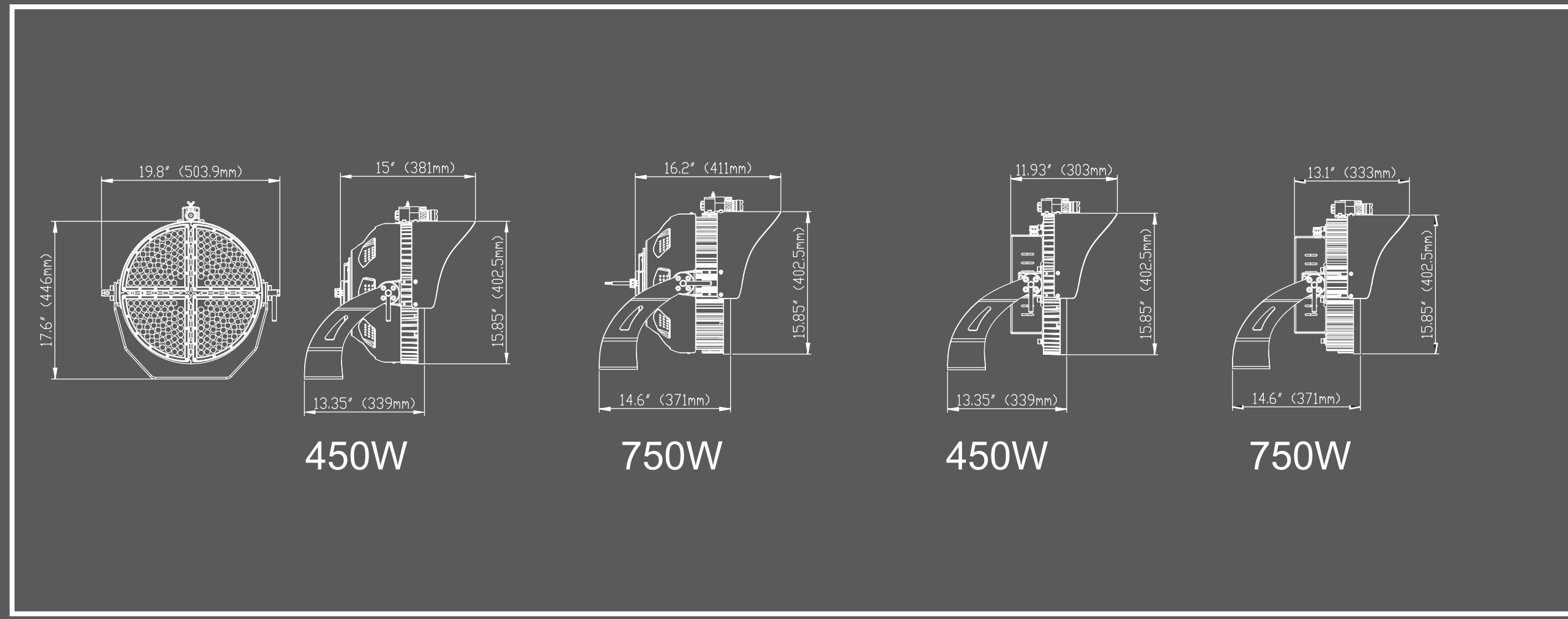
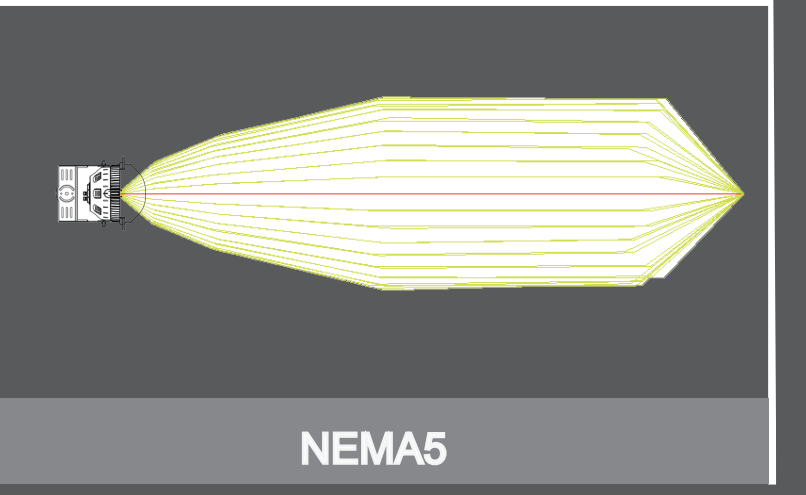
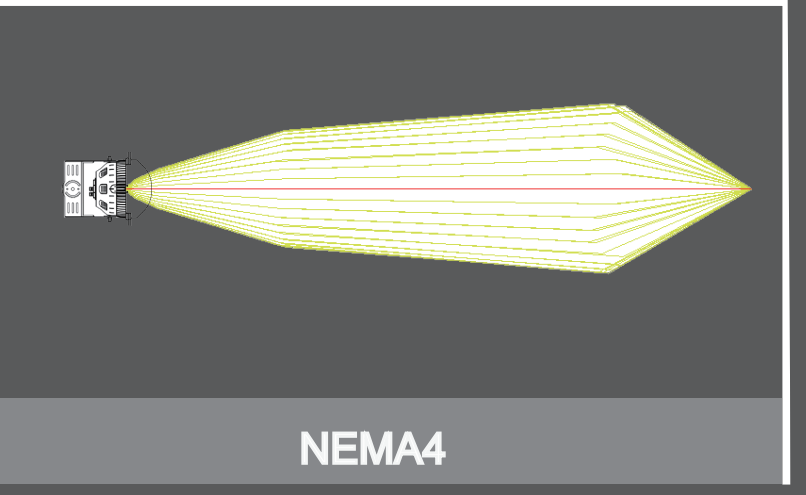
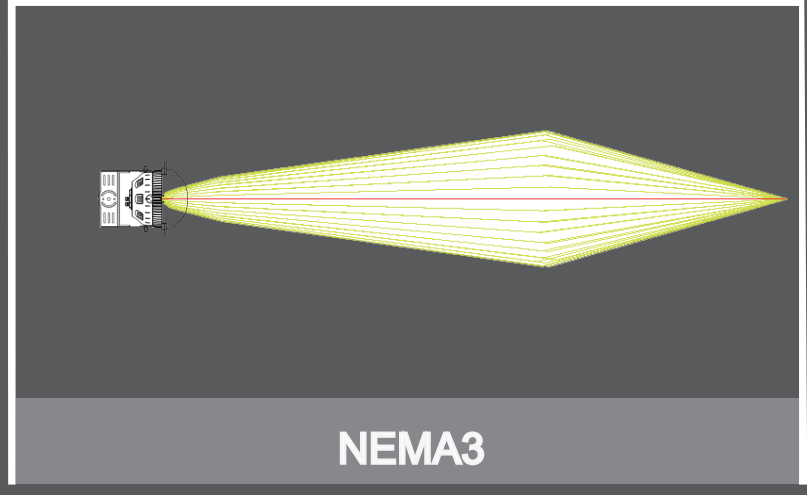
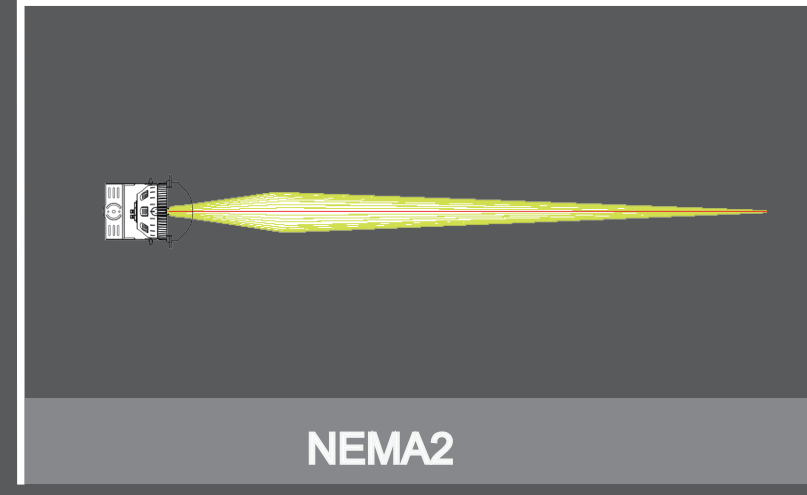
Intelligent Controller Aiming Laser



Modular Sport Light Series

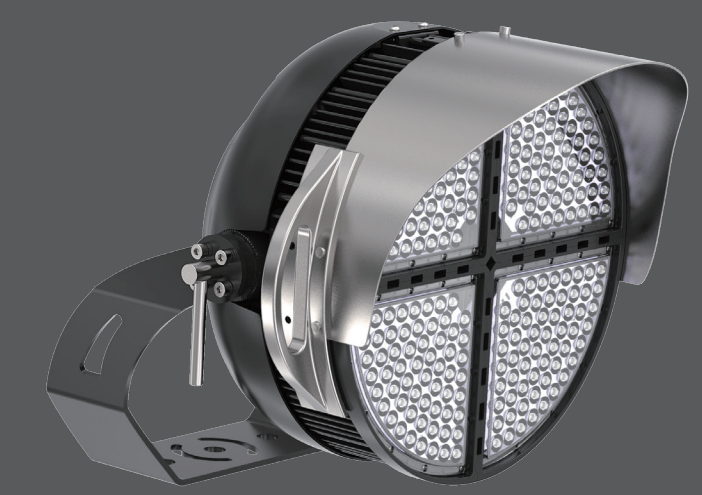
Example : CPS-SLR-450W-57K-2-B-Z1-D0-X1

Product Series	Voltage	Wattage	CCT	Optics	Finish	Installation	Driver	Driver house
CPS-SL	R 120-277V L 277-480V	450 750	40K 4000K 50K 5000K 57K 5700K	2 NEMA2 3 NEMA3 4 NEMA4 5 NEMA5	B Black G Gray	Z1 Trunnion Z2 Slip Fitter	X1 Meanwell X2 Inventronics EUD/ESD X3 Inventronics EUM/ESM	Y1 Round Driver Housing Y2 Square Driver Housing



Wattage : 450/750W	Input Voltage : 120-277V/277-480V
LPW : 130-160Lm/W	Power Supply : Meanwell/Inventronics
LED Type : Lumileds/Osram	Net Weight : 19.0kg/42.00lb
CCT : 4000K/5000K/5700K	Operating Temp : -30°C~+50°C
CRI : >70	EPA : 1.65
IP : IP66	

Trunnion Mount Kit



Slip Fitter

